



Toyota Pocket Style® Fender Flares Set of 4

Set Part #31929-02

Rev-1 11/19/2013

For complete fitment info visit www.bushwacker.com

STEP 1 – PRIOR TO INSTALLATION

- A) Bushwacker only approves installing the flares according to these written instructions with the hardware provided. WARNING:** Failure to install according to these instructions will invalidate the warranty. This includes, but is not limited to using alternative installation methods, hardware, or materials. **DO NOT USE:** Loctite, SuperGlue, or similar products on the hardware or the flares.
- B) Fit:** Verify the fit of the flares to vehicle. (Some filing, sanding, or cutting may be necessary to ensure proper fit).
- C) Painting:** (Optional) if paint is desired it must be done prior to installing flares on vehicle. Clean outer surface with a good grade degreaser. **DO NOT USE LACQUER THINNER OR ENAMEL REDUCER AS A DEGREASER.** Wipe outer surface thoroughly with a tack rag prior to paint. Application of plastic adhesion promoter for ABS plastic as per your paint system manufacturer's recommendations is required. Paint flares using a high quality enamel, or polyurethane automotive paint. If painting edge trim (not recommended), use a flex additive.
- D) Performance:** Using larger Tires may increase the area required to turn the vehicle. Some Tire/Rim combinations may require lowering bump stops and or installing steering stops to prevent tire from contacting flare.
- E) Exhaust System:** Modifications may be necessary to maintain a minimum 4" clearance between flares and exhaust pipes. (Exhaust gases should not vent directly onto flares)
- F) Metal Protection:** All exposed fasteners and bare metal should be treated with rust resistant paint BEFORE installing flares. Spray inner fender wells with undercoating AFTER flare attachments have been completed.
- G) Decals:** Flares may interfere with existing decals on vehicle. If you wish, remove decals prior to installation of flares.

TOOLS FOR EASY INSTALLATION:

- Utility Knife
- Vise Grips
- Drill
- 5/16" Drill Bit
- Trim Tool or Flat Head Screwdriver
- Torx Wrench
- Socket Wrench
- 10mm Socket
- #2 Phillips Screwdriver
- 1/2" Wrench

LIMITED LIFETIME WARRANTY AGAINST ANY MANUFACTURING DEFECTS

- To claim a warranty, you must provide Proof of Purchase.

Included in Hardware Kit:

- | | | | | | | |
|--|--|--|---|---|---|--|
| 1. 
GR1-0001,
#14 Screw Nylon
Grommet,
2 pcs | 2. 
SW1-0058,
#10 x 5/8" Phillips
SS Truss Screw,
6 pcs | 3. 
CL1-0022,
#10 "U" Clip,
6 pcs | 4. 
SW1-0067,
5/16 x 18 x 3/8"
SS Torx Screw,
19 pcs | 5. 
SW1-0041,
5/16 x 18 x 1"
SS Torx Screw,
4 pcs | 6. 
NU1-0019,
5/16-18 Jam Fin.
Nylock Nut,
23 pcs | 7. 
WA1-0012,
.320 x .700 x .03
SS Washer,
23 pcs |
| 8. 
WA1-0015,
5/16 x 1" SS
Fender Washer,
4 pcs | 9. 
SW1-0052,
T-45 Torx Bit,
1 pc | 10. 
SW1-0005,
1/4-20 x 3/4"
HxHd Slot Screw,
4 pcs | 11. 
NU1-0011,
1/4-20 SS Serrated
Flange Nut,
4 pc | 12. 
WA1-0005,
5/16" SAE Zinc
Flat Washer,
4 pcs | 13. 
GP1-0005,
Large Wiper Style
Edge Trim,
324 inches | 14. 
ET1-0002,
Edge Trim Tool,
1 pc |

Flare Pocket Hardware Installation:



Put a Washer (WA1-0012) on each Bolt (SW1-0059).



Put each Bolt/Washer combination through a pocket hole in the flare, Bolt head and Washer on the outside.



Place a Nut (NU1-0019) over the end of each Bolt and tighten, using a 1/2" wrench for the Nut and the supplied Torx Bit (SW1-0052) for the Bolt. Repeat for remaining pockets.



DO NOT install pocket hardware on Front Bumper Piece.

Front Flare Installation Procedures (Passenger's Side):



Remove seven factory screws from the fender lip. Save screws for reinstallation. Remove flare by pulling part away from side of vehicle.

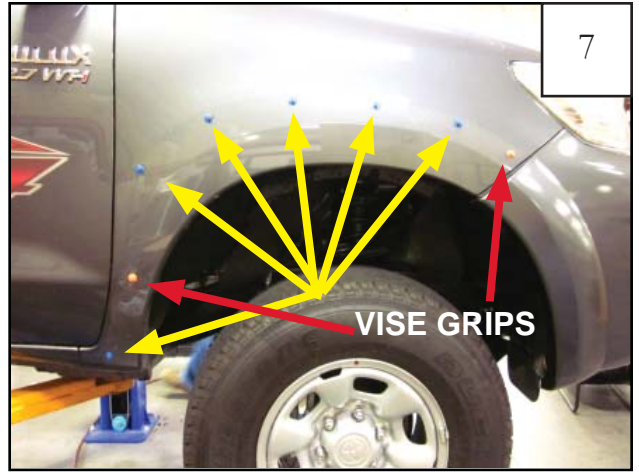


Using a clockwise twisting motion, remove six factory plastic clips from fender. See step 7.



6

Remove two clips from front using vise grips, pulling with a rocking motion. See step 7.



7

Clip locations.



8

Remove 3 factory screws from under front bumper. Set aside for reinstallation.



9

Pull down bumper cover and splash shield.



10

Using a flat head screwdriver, with a pressing motion, remove eight plastic clips located inside of bumper cover. Remove front flare bumper extension.



11

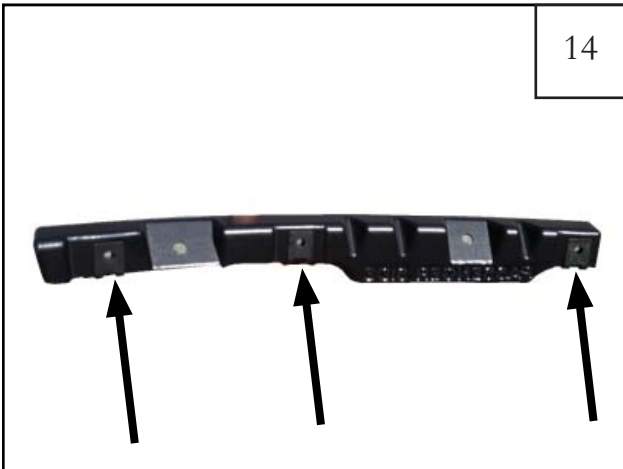
Slide a supplied Washer (WA1-0015) onto a supplied Hexhead Slot Screw (SW1-0005)



Insert the Screw/Washer assembly through the hole drilled in the end of the Front Main Flare and into the corresponding hole in the Front Bumper Piece. Two places.



Install a supplied Nut (NU1-0011) on ends of screws and tighten



Install supplied clip (CL1-0022) over three notches in bracket.

STEP 15 - EDGE TRIM INSTALLATION

A. Peel two to three inches of red vinyl backing away from Edge Trim (GP1-0005) tape. Applying the adhesive side of the edge trim to the inner side of the flare, affix the edge trim to the top edge of the flare (the portion that comes in contact with the vehicle).

B. Press edge trim into place along the top edge of the flare in one-foot increments, pulling red vinyl backing free as you continue to work your way around the top edge of the flare.

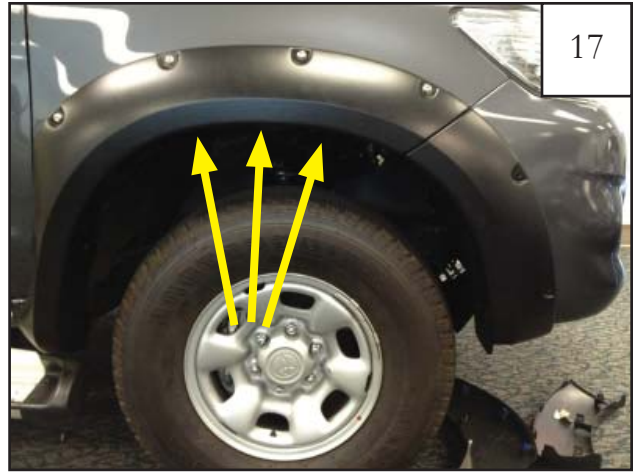
C. Apply Edge Trim to Front Bumper Piece if installing.





16

Line the bracket up with the two uppermost factory holes in the fender. Use two factory screws to install bracket onto fender.



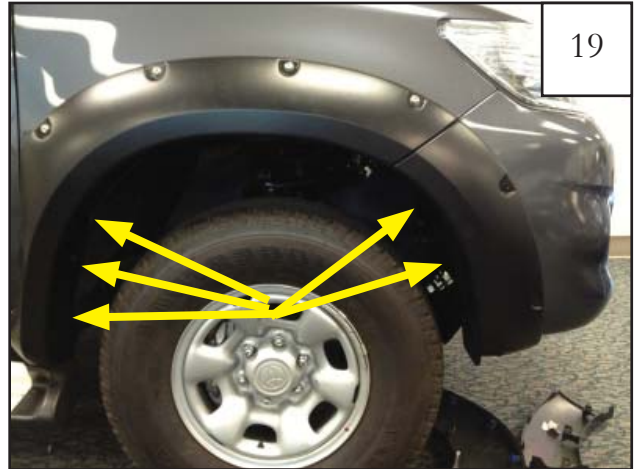
17

Attach flare to bracket using three supplied screws (SW1-0058).



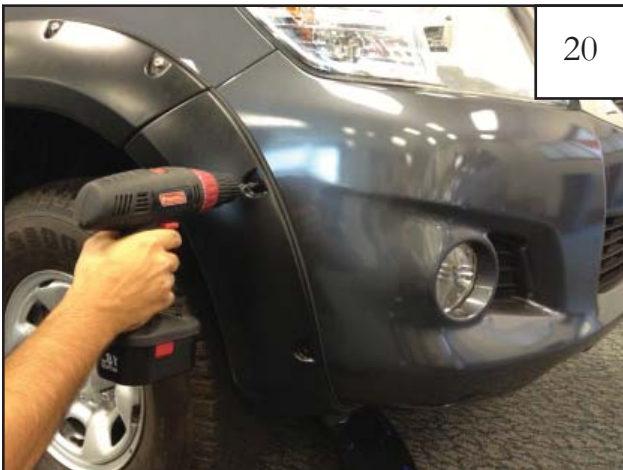
18

Make sure bumper piece is aligned with the style line.



19

Re-install factory screws into 5 remaining hole locations.



20

Drill through existing holes in bumper piece and into the plastic bumper with a 5/16" drill bit.



21

Slide a supplied .320 SS Washer (WA1-0012) onto a SS Torx Screw (SW1-0041). Inserting screws through holes drilled in bumper in step 20.



22

Install a supplied SS Fender Washer (WA1-0015) and supplied 5/16" Nylock Nut (NU1-0019) on back of screws installed in step 21 and tighten. *Note: Tighten from the back.*



23

Pull down bumper cover and slide splash shield back into place. Reinstall factory hardware.



24

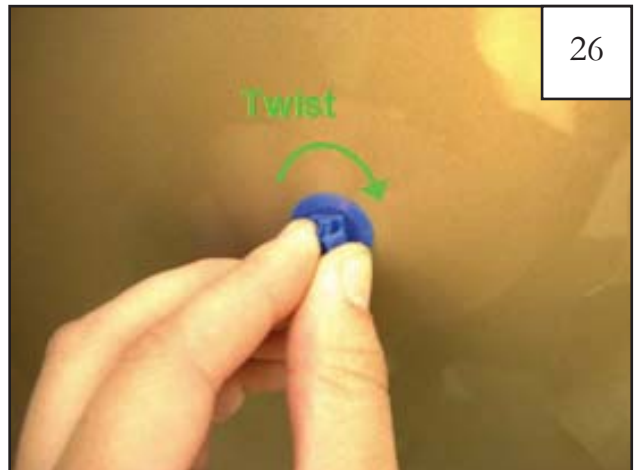
Tighten all screws. Completed Front Flare installation

Rear Flare Installation Procedures (Passenger's Side):



25

Remove six factory screws from the fender lip. Save screws for reinstallation. Remove flare by pulling part away from side of vehicle.



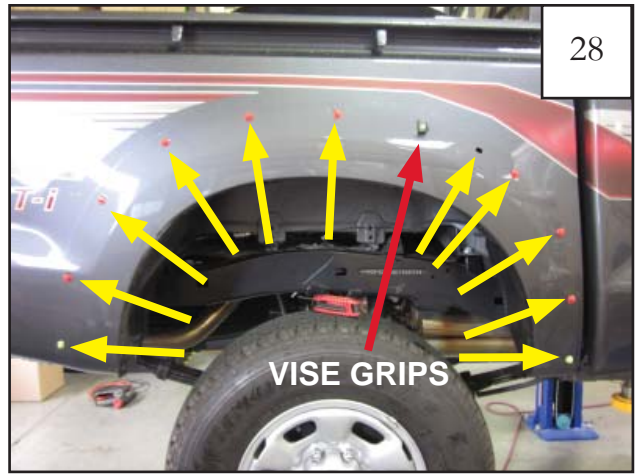
26

Using a clockwise twisting motion, remove eleven factory plastic clips from fender. See step 28.



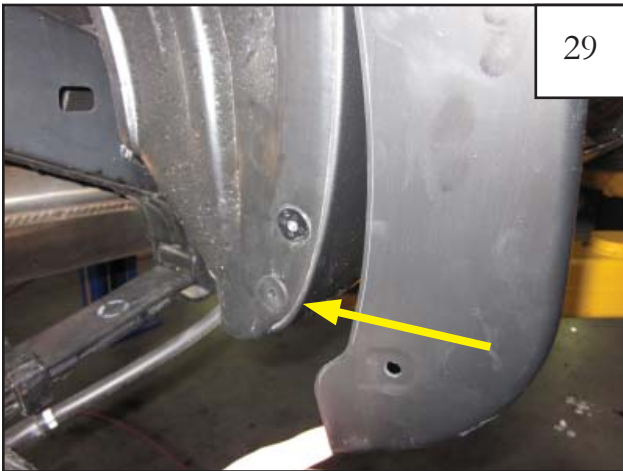
27

Remove one clip from fender using vise grips, pulling with a rocking motion. See step 28.



28

Clip locations.



29

Remove factory installed grommet from lower front of the rear wheel well.



30

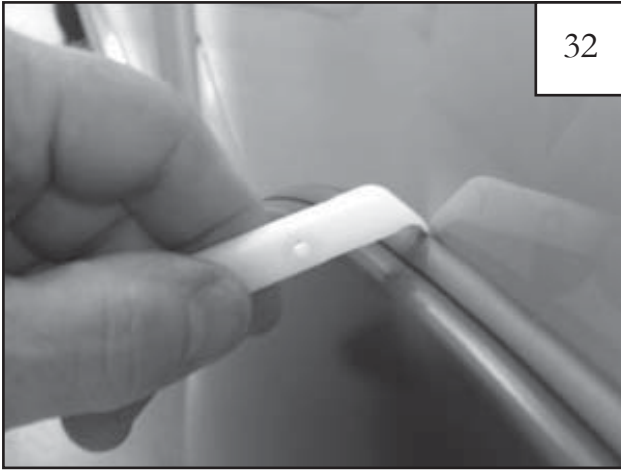
Install supplied grommet (GR1-0001) into factory hole.



31

Position flare on fender and re-install factory screws through holes in flare and into factory holes.

Edge Trim Tool Procedures:



Using supplied Edge Trim Tool (ET1-0002), seat edge trim against vehicle by hooking curved end under edge trim at one end of flare. Next, slide around outer edge of flare to the other end.



Using flat end of supplied Edge Trim Tool (ET1-0002), seat edge trim against flare by inserting straight end between edge trim and flare at one end. Next, slide around entire edge to the other end.